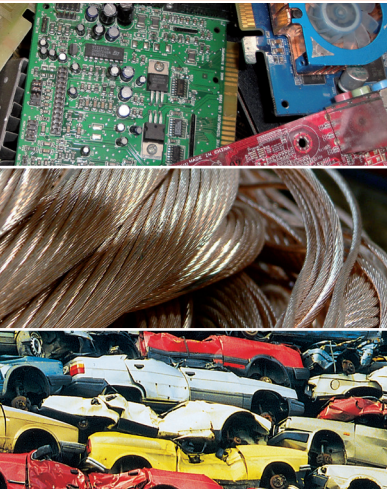


WRF 2017

Electronics & Cars Recycling November 14 – 17, 2017, Macau, China

Conference, exhibition and plant tours organized by
World Recycling Forum



Conference

Circular Economy

Networking

Workshop

Plant Tours

Exhibition

Supported by:

Auto Recyclers Association of Australia (ARAA)
Basel Convention Regional Centre for Asia and the Pacific
China End of Life Vehicle Economy of China Resource
Recycling Association (CELVE)
China National Resources Recycling Association (CRRA)
Hong Kong Waste Management Association (HKWMA)
Institute of Scrap Recycling Industries, Inc. (ISRI)
Japan Automobile Manufacturers Association (JAMA)
Japan Automotive Recyclers Association (JARA)
Japan Electronics & Information Technology Industries Association (JEITA)
Macao Trade and Investment Promotion Institute (IPIM)
Waste Management & Recycling Association of Singapore (WMRAS)



FOREWORD



PROFESSOR JINHUI LI

Chairman of the
Steering Committee
Electronics & Cars Recycling

Welcome to Macau!

It is my great honor and privilege to welcome all of you to the Electronics & Cars Recycling WRF 2017 in Macau on behalf of the Steering Committee. Thank you for attending the congress.

MACAU lies on the western side of the Pearl River Delta, is a special administrative region of People's Republic of China. It is a city of only 31.3 km² in size yet the home of Asia's largest fully integrated convention and exhibition centre; a city of world heritage stature that also boasts one of the world's most spectacular and modern skylines; a city that blends the rich traditions of Chinese and Portuguese cultures which is reflected in its lifestyle, food, restaurants, architecture and festivities. In an effort to protect this beautiful city, the Macau

Environmental Protection Plan 2010–2020 aims to promote a conservation and recycling-oriented society. In this densely-populated city, the recycling of electronic and electrical waste and end-of-life vehicles is one of the major concerns in Macau. It has made noticeable progresses on electronic waste pollution control, such as the project of "Technology and demonstration of vehicle emission control and electronic waste pollution control in Macau" (2010–2012), and progressive effort are being made on electronics and cars recycling.

The Electronics & Cars Recycling WRF 2017 include electronics recycling and cars recycling sessions, and may address important topics that are of crucial relevance to governments, industry and individuals. Leading re-



cycling experts, including manufacturers, recyclers, refurbishers, remanufacturers, recycling associations, legislators and policy-makers, have been invited all over the world to this forum, to share experience, exchange valuable opinions, exhibit cutting-edge technologies, and create great business ideas. On-site visits to recycling facilities are arranged for participants to the electronics & cars recycling industry in mainland China near Macau & Hong Kong. This is a professional platform to communicate with excellent scholars and finding you potential business partners and clients.

I wish you a pleasant stay in Macau and enjoy the forthcoming Electronics & Cars Recycling WRF 2017. I am looking forward to meeting you in Macau!



CONFERENCE STRUCTURE

Time	Room: Caspian I	Room: Caspian II	Exhibition
MONDAY, NOVEMBER 13, 2017			
17.00 – 19.00	Registration		
TUESDAY, NOVEMBER 14, 2017 – PLANT TOURS			
07.30 – 08.00	Registration		
08.00 – 17.00**	GAC Group, China*		
08.00 – 17.00**	Guangzhou Valuda Group, China*		
08.00 – 17.00**	Foshan Shunde Xinhuanbao, China*		
17.00 – 19.00	Registration and welcome reception in the exhibition area		
WEDNESDAY, NOVEMBER 15, 2017			
08.00 – 09.00	Registration, welcome coffee and tea in the exhibition area		
09.00 – 10.30	Opening and Keynote Speakers		Exhibition
10.30 – 11.00	Coffee and tea break in the exhibition area		
11.00 – 13.00	Circular Economy I	Tech Box 1	
13.00 – 14.30	Lunch in the exhibition area		
14.30 – 16.00	Recycling, Dismantling and Reuse Strategies	Tech Box 2	
16.00 – 16.30	Coffee and tea break in the exhibition area		
16.30 – 17.30	Country Reports	Tech Box 3	
as from 17.30	"Meet your clients" reception in the exhibition area		
THURSDAY, NOVEMBER 16, 2017			
08.00 – 09.00	Welcome coffee and tea in the exhibition area		Exhibition
09.00 – 10.30	Circular Economy II	Tech Box 4	
10.30 – 11.00	Coffee and tea break in the exhibition area		
11.00 – 12.30	Company Spotlights Electronics Recycling	Tech Box 5	
12.30 – 14.00	Lunch in the exhibition area		
14.00 – 15.00	Company Spotlights Cars Recycling		
15.00 – 15.30	Coffee and tea break in the exhibition area		
15.30 – 16.30	Circular Economy III		
as from 16.30	"Bye bye bar" in the exhibition area		
FRIDAY, NOVEMBER 17, 2017 – PLANT TOUR AND WORKSHOP			
09.00 – 16.00**	ALBA Integrated Waste Solutions Limited, Hong Kong*		
09.00 – 12.00	ELV Recycling Challenges and Opportunities*		

China visa is required for the above plant tours in China

* Plant tours and workshop will take place with a minimum of 10 participants

** No guarantee on arrival time due to traffic conditions & immigration process

OPENING & KEYNOTE SPEAKERS

PROF. ZHISHI WANG

Macau Environmental Research Institute
Macau University of Science and Technology
Director
Membership of Environment Council of Macau
China

“Opening speech”



DR EDEN WOON

Alba Asia Group
Vice Chairman
Hong Kong

“Boosting Recycling Business in China –
ALBA Group’s Model for the Circular
Economy”



INTERNATIONAL STEERING COMMITTEE



PROF. DUAN WENG

Chairman of WRF
Tsinghua University, Institute for
Energy & Environment Materials
Director, Chinese Materials
Research Society (C-MRS),
Vice President, China



PROF. JINHUI LI

Chairman
Basel Convention, Coordinating
Center for Asia and the Pacific,
Executive Director, School of
Environment, Tsinghua University,
Professor, China



ROGER BURRI

Co-Chairman
Metal Depot Zurich AG
CEO
Switzerland



KOK WAH BOEY

HP Inc.
Head of Environmental
Management
Asia Pacific and Japan



JEAN-PHILIPPE FUSIER

MTB Recycling
President
France



PROF. MINORU GOKO

NPO-JARA
Vice President
Nihon Automobile College
Professor, Japan



PAUL HEALEY

Glencore Canada Corporation
Manager, Recycling
Canada



JOSEPH M. HOLSTEN

LKQ Corporation
Chairman of the Board
USA



PROF. TRUNG HAI HUYNH

Institute for Environment Science and Technology (INEST), Hanoi University of Science & Technology (HUST), Director, Vietnam



PROF. HSIAO-KANG MA

National Taiwan University
Department of Mechanical Engineering
Taiwan



TAKASHI IKARI

Anchor Network Service, Inc.
President and CEO
Japan



VENKATESHA MURTHY

Vans Chemistry Pte. Ltd.
Managing Director
Singapore



JEFFREY JERMYN

GEEP International Inc.
President
Canada



SCOTT NEWELL

Newell Recycling Equipment, LLC
Chairman and CEO
USA



DR MANIS KUMAR JHA

Metal Extraction & Forming Division, National Metallurgical Laboratory, Assistant Director/ Senior Scientist, India



KAZUMI NOZAWA

Perry Johnson Registrars, Inc.
Director of Asia Pacific Recycling Initiatives



FONS KRIST

Aurubis AG
Business Development
South-East Asia, Recycling & Precious Metals, Singapore



SIVADASAN PANIKKER

Ericsson Resource & Competence Center Sdn Bhd, Director, Ecology Management APAC
Malaysia

INTERNATIONAL STEERING COMMITTEE



STEPHAN SCHWARZ
ALBA International Recycling
CEO
Germany/China



THIERRY VAN KERCKHOVEN
Umicore Precious Metals Refining
Head of Supply Recyclables
Belgium



STEVE SKURNAC
Sims Recycling Solutions
Global President
USA



SCOTT VENHAUS
Arrow Electronics, Inc.
Director, Global Sales
Enablement & APJ Sales
USA



WEI SUN
Volkswagen (China) Investment
Co., Ltd., Group R&D –
Environment and Sustainability
China



ROBIN WIENER
Institute of Scrap Recycling
Industries, Inc. (ISRI)
President
USA



VIVIAN TAI
DELL Technologies, Head
of Environmental Affairs &
Producer Responsibility, Asia
Pacific & Japan, Taiwan



SHUJIE XU
China Automotive Technology
and Research Center (CATARC),
Automotive Data Center,
Recycling & Utilization Data
Department, Director, China



MARK TOMASZEWSKI
INMETCO
President
USA



MEDIA PARTNERS



BRIAN TAYLOR

Recycling Today Media Group
Associate Publisher/
Editorial Director
Hong Kong



XIN ZHAI

Resource Recycling
Chief Editor
China



LOCATION & ACCOMODATION



Electronics & Cars Recycling WRF 2017 will be held at the Sheraton Grand Macao Hotel, Cotai Central.

The hotel is situated on the western bank of the Pearl River Delta. Just an hour's ferry or a 15-minute helicopter ride from Hong Kong, this unique region combines a vibrant Portuguese heritage with colorful Chinese roots. Located at Sands® Cotai Central in the center of the exciting Cotai Strip®, Sheraton Macao Hotel is just steps from premier shopping, dining and entertainment.



A number of rooms are held at discounted rates for participants of the conference registering **before October 27, 2017**.

The journey from Hong Kong International Airport to Macau Taipa takes about an hour by ferry and costs approximately HK\$ 254 (US\$ 33). From Macau Taipa you can reach the Sheraton Macao Hotel either by hotel shuttle bus or by taxi.

Sheraton Grand Macao Hotel, Cotai Central*****

Estrada do Istmo. s/n

Cotai, Macau

Phone +853 2880 2000

Fax +853 8113 2000

www.sheratonmacao.com



ABOUT MACAU

Located close to Hong Kong on the southern tip of China, Macau is a rapidly developing modern destination with a fascinating heritage of European influence. Cotai Strip Macau, an integrated city within Macau, offers easy international access, exciting night-life, world-class shopping and cultural richness.

Macau's historic centre is now an UNESCO World Heritage site. The blend of indigenous Chinese culture and 400 years of Portuguese colonial influence provides a truly unique cultural backdrop. Marvel at the historic ruins, mystical temples and impressive fortresses, which illustrate the evolution of dual Western and Chinese civilizations spanning over four and a half centuries. On festi-

val days, you might even catch a spectacular lion or dragon dance.

Population

The total population is estimated at around 643,100. Over 90% of Macau residents are ethnic Chinese. The remaining includes Portuguese, Filipino and other nationalities.

Language

Chinese and Portuguese are the official languages, Cantonese being most widely spoken. The official languages are used in government departments in all official documents and communications. English is generally used in trade, tourism and commerce.

Currency

Macau Pataca (MOP) is the official currency, but Hong Kong Dollars (HKD) are also accepted.



www.macautourism.gov.mo

TRAVELLING TO MACAU

Visa for Macau

Most nationalities can enter Macau without a visa. Please refer to the **Macau Immigration Services** for current entry requirements and visa exemptions.

More information

www.fsm.gov.mo

By air

Hong Kong International Airport (HKIA)

Participants from outside of Asia are more likely to fly into Hong Kong International Airport and then take the ferry to Macau. After landing, you can proceed directly to the Macau Ferry Terminals by following the direction signs.

There is no need to immigrate to Hong Kong. Your luggage will be transferred directly from the airplane to the Macau ferry upon ferry ticket purchase. For further information of Hong Kong ferry services, please visit the websites of **TurboJET** and **Cotai Water Jet**.

Macau International Airport (MFM)

Participants from Asia can fly into Macau International Airport, which is located on Taipa Island and only 30 minutes from the city center. It has frequent ser-

vices to different destinations in Asia. If you are flying into Macau, you can ask the hotel for a pick-up service. Taxis are conveniently available from the taxi rank outside the airport. A taxi from the airport to the town center should cost about HK\$ 165 (US\$ 22), surcharge and luggage fee is also applicable. A number of buses serving the airport will criss-cross the city and stop at major hotels.

More information

www.macau-airport.com

Helicopter


Sky Shuttle runs a 15-minute helicopter shuttle service between Macau Maritime Ferry Terminal and Shun Tak Centre in Sheung Wan with daily flights. It also has a helicopter shuttle linking Macau with Shenzhen six times a day, the trip takes about 15 minutes.

More information

www.skyshuttlehk.com

By sea

High-speed ferries to and from three locations in Hong Kong (Tsimshatsui, Sheung Wan and Hong Kong International Airport) depart every 15–30 minutes. Travel time is approximately 60



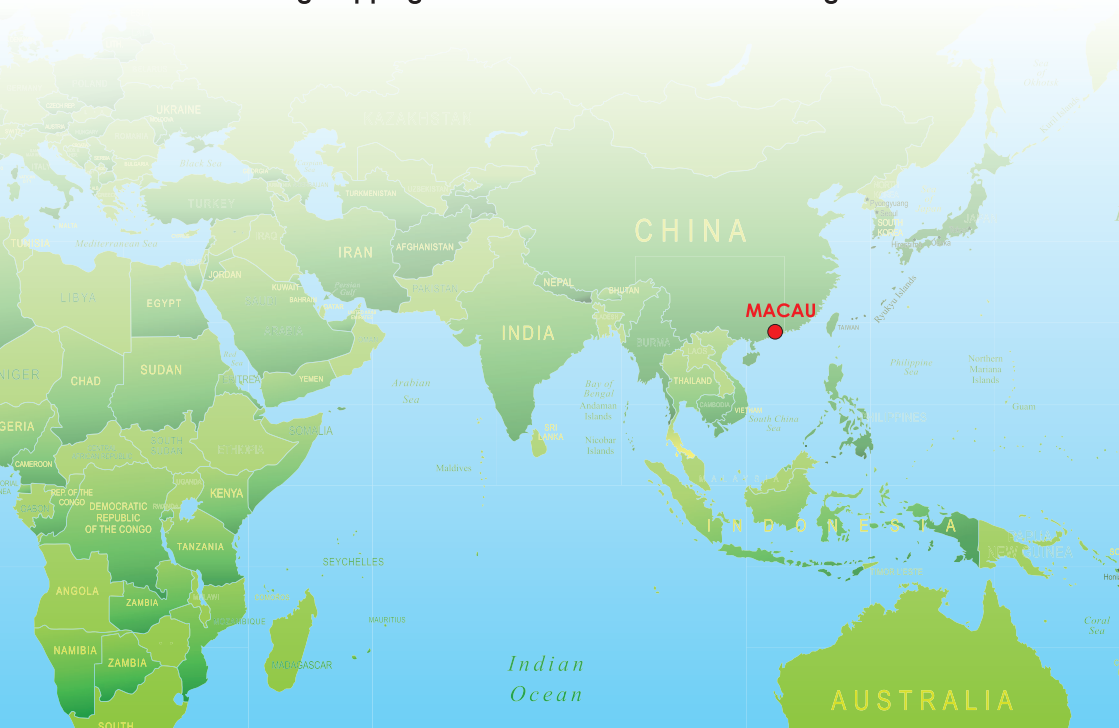
minutes. There are also services to and from Shenzhen, Guangzhou and Jiangmen.

- For Hong Kong ferry services, please visit the websites of **TurboJET** and **Cotai Water Jet**.
- For Shenzhen services, please visit the website of **TurboJET** or **Yuet Tung Shipping**.
- For Guangzhou services, please contact **TurboJET**.
- For Jiangmen services, please contact **Yuet Tung Shipping**.

Land crossings from Mainland China are made through the Border Gate on Macau Peninsula and the Lotus Bridge in Cotai. The Kee Kwan Motor Road Co. and China Travel Service (Macao) Ltd. operate a roundtrip air-conditioned bus service from major cities in Guangdong Province to Macau. The buses arrive at Gongbei Port in Zhuhai, from where you may go through the checkpoints at Gongbei Port and Border Gate to Macau.

More information

www.macautourism.gov.mo



**[CHINA VISA
IS REQUIRED!]**

PLANT TOUR

TUESDAY, NOVEMBER 14, 2017

**GUANGZHOU AUTOMOBILE GROUP
MOTOR CO., LTD., CHINA***



Visit of China's first large state owned car manufacturer

08.00	Departure by bus to Guangzhou Automobile Group Motor Co., Ltd.
11.00	Arrival at Guangzhou Automobile Group Motor Co., Ltd.
11.00 – 14.00	Visit of China's first large state owned car manufacturer
17.00**	Arrival at the Sheraton Grand Macao Hotel, Cotai Central

Founded on July 21, 2008, **Guangzhou Automobile Group Motor Company Limited (GAC MOTOR)** is committed to the manufacturing and sale of world-class vehicles, engines, parts, components and automotive accessories, and to the research and development of automotive engineering technologies. GAC MOTOR's Panyu Base occupies an area of 1.2 million square meters. As of the end of September, 2016, the company has a staff of over 9,000 employees. As a national high-tech enterprise, its world-class vehicle and engine plant of the first phase with an annual production capacity of 100,000 units was completed in September 2010. By October 2014, the company's annual capacity had expanded to 200,000 units. Following the completion of a new 150,000-unit capacity plant in June 2016, Panyu Base boasts a standard capacity now reaching 350,000 units/year.

In executing its global vision, GAC MOTOR has integrated premium global resources and adhered to forward development and international standards. It has successfully launched an array of models, including the GA5, GS5, GA3S, GS5 Super, GA6, GS4 as well as NEVs, the GA5 PHEV, GA8 and GS8, creating a complete data system and process of evolution in its product line. GAC MOTOR have independently developed and built the A/A0-class and B/C-class platforms. Starting 2014, Trumpchi models have fully entered the 2.0 era. Since its launch at the end of 2010, GAC MOTOR has realized a high-speed development with a CAGR of over 80%, ranking NO.1 among all domestic brands for 4 consecutive years (2013–2016), in the IQS released by JD Power. This has helped the company to carve out a development path based on "high-end positioning, quality-first and innovation-driving" and to push the industry at "GAC MOTOR speed".

www.gac-motor.com

China visa is required for the above plant tour
* Plant tours will take place with a minimum of 10 participants
** No guarantee on arrival time due to traffic conditions & immigration process



GAC MOTOR

GAC MOTOR

Dream to the world



Guangzhou Automobile Group Motor Co., Ltd
Address: 633 East Jinshan Road, Panyu District, Guangzhou, China
Postal code: 511434
Customer hotline: 0086-20-392061312 www.gac-motor.com

[CHINA VISA
IS REQUIRED!]

PLANT TOUR

TUESDAY, NOVEMBER 14, 2017

GUANGZHOU VALUDA GROUP, CHINA*



Visit of the car dismantling plant

08.00	Departure by bus to Guangzhou Valuda Group
11.00	Arrival at Guangzhou Valuda
11.00 – 14.00	Visit of the car dismantling plant
17.00**	Arrival at the Sheraton Grand Macao Hotel, Cotai Central

Guangzhou Valuda Group Co., Ltd. has been dedicated to the recycling and utilization of waste since its establishment twenty-three years ago. We process around 600,000 tons of over 500 types of wastes per year, including plastics, metal, paper, wood and end-of-life vehicles. In 2015, Valuda launched the "End-of-Life Vehicle Recycling and Dismantling Project", through which we started to provide comprehensive services such as write-off, recycle and dismantling of end-of-life vehicle as well as automobile aftermarket service, and hence formed a full service chain covering end-of-life vehicle dismantling, auto parts recycling and vehicle maintenance.

www.valuda.com.cn

China visa is required for the above plant tour

* Plant tours will take place with a minimum of 10 participants

** No guarantee on arrival time due to traffic conditions & immigration process

广州市万绿达集团有限公司

Guangzhou Valuda Group Co., Ltd.

广州市万绿达集团有限公司致力于废弃物的回收和循环利用23年，主营业务覆盖废塑料、废金属、废纸品、废木料、报废汽车等500多个品种，年处理能力达60万吨。2015年万绿达全面启动“报废汽车回收、拆解”项目，专业提供机动车辆报废注销、回收拆解和汽车后市场系列综合服务，形成报废汽车拆解、汽车零配件再利用、汽车维护等为一体的综合服务平台。

Valuda Group has been dedicated to the recycling and utilization of waste since its establishment twenty-three years ago. We process around 600,000 tons of over 500 types of wastes per year, including plastics, metal, paper, wood and end-of-life vehicles. In 2015, Valuda launched the “End-of-Life Vehicle Recycling and Dismantling Project”, through which we started to provide comprehensive services such as write-off, recycle and dismantling of end-of-life vehicle as well as automobile aftermarket service, and hence formed a full service chain covering end-of-life vehicle dismantling, auto parts recycling and vehicle maintenance.



联系方式 CONTACT INFO

热线电话: 4008329886 020-82240822
HOTLINE

公司官网: <http://www.valuda.com.cn>
WEBSITE

[CHINA VISA
IS REQUIRED!]

PLANT TOUR

TUESDAY, NOVEMBER 14, 2017

FOSHAN SHUNDE XINHUANBAO RESOURCE
UTILIZATION CO., LTD., CHINA*



Visit of the electronics recycling plant

08.00	Departure by bus to Foshan Shunde Xinhuanbao
11.00	Arrival at Foshan Shunde Xinhuanbao
11.00 – 14.00	Visit of the electronics recycling plant
17.00**	Arrival at the Sheraton Grand Macao Hotel, Cotai Central

Foshan Shunde Xinhuanbao Resource Utilization Co., Ltd. was established in 2005 with the registered capital of 95 million RMB. Belonging to environmental protection industry, Xinhuanbao is a key planning project of "Guangdong 12th Five-Year-Plan WEEE Treatment", which mainly deals with the dismantling and resource recovering of wasted TV, computer, washing machine, refrigerator, air-conditioner, mobile phone and electronic products. Xinhuanbao possesses 7 garden-like factory buildings and 3 warehouses, the resource utilization lines mainly handle the PCB (Printed Circuit Board), wasted refrigerator, CRT generated from television and computer, wasted air-conditioner, wasted washing machine and further processing of wasted plastic. Xinhuanbao possesses the annual handling capacity of 10000 tons of industrial solid wastes, 8000 tons of strictly controlled wastes, 50000 tons of WEEE. Xinhuanbao upholds the idea of "Green, Innovation, Ingenuity", the resource utilization lines adopt the international advanced facilities to realize the "Product – Waste – Renewable resource – Remanufactured products" circular utilization mode. Xinhuanbao values highly the driving forces brought by scientific innovation, and has established close Industry-University-Research collaborations with many domestic institutions. Xinhuanbao is a post doctoral research working station permitted by the State Post Doctoral Management Committee, the station focuses on circular utilization of WEEE. With the establishment and implementation of EPR (Extended Producer Responsibility) regime, Xinhuanbao will uphold the spirit of credibility, benefiting others, green and sustainability, to provide all the electrical and electronic enterprises in Guangdong province with close and warm services.

www.xinhuanbao.com.cn

China visa is required for the above plant tour
* Plant tours will take place with a minimum of 10 participants
** No guarantee on arrival time due to traffic conditions & immigration process



佛山市顺德 鑫还宝资源利用有限公司

佛山市顺德鑫还宝资源利用有限公司成立于 2005 年，注册资本人民币 9500 万元，属再生资源环保行业，系广东省“十二五”废弃电器电子产品处理规划重点项目，系经国家四部委（发改委、财政部、环保部、工信部）核定从事废旧电视机、电脑、洗衣机、冰箱、空调、手机、小家电和电器电子产品的回收、拆解、深加工、贵金属提炼与再制造的定点企业。

Foshan Shunde Xinhuanbao Resource Utilization Co., Ltd. was established in 2005 with the registered capital of 95 million RMB. Belonging to environmental protection industry, Xinhuanbao is a key planning project of “Guangdong 12th Five-Year-Plan WEEE Treatment”, which mainly deals with the dismantling and resource recovering of wasted TV, computer, washing machine, refrigerator, air-conditioner, mobile phone and electronic products.



联系方式

公司服务专线：0757-23623696/15718453331

公司传真：0757-27833488

公司网址：<http://www.xinhuanbao.com.cn>

杏坛厂区：佛山市顺德区杏坛镇德富路 75 号

公司监督热线：0757-27834222/15718451122

公司邮箱：sdxinyue@21cn.com

伦教厂区：佛山市顺德区伦教永丰工业区工业南路

CONFERENCE PROGRAM

MONDAY, NOVEMBER 13, 2017

17.00 – 19.00 Registration

TUESDAY, NOVEMBER 14, 2017

07.30 – 08.00 Registration

08.00 – 17.00 Plant tours

17.00 – 19.00 Registration and welcome reception in the exhibition area

WEDNESDAY, NOVEMBER 15, 2017

08.00 – 09.00 Registration, welcome coffee and tea in the exhibition area

09.00 – 10.30 OPENING AND KEYNOTE SPEAKERS

"Welcome and introduction"

Prof. Jinhui Li, Chairman

OPENING SPEAKER

Prof. Zhishi Wang, Macau Environmental Research Institute, Macau University of Science and Technology, Membership of Environment Council of Macau, China

KEYNOTE SPEAKER

"Boosting Recycling Business in China – ALBA Group's Model for the Circular Economy"

Dr Eden Woon, Alba Asia Group, Hong Kong

10.30 – 11.00 Coffee and tea break in the exhibition area

Session 1: Circular Economy I

Session Chairman: Prof. Jinhui Li, Tsinghua University, China

11.00 – 11.30 "How can Producers Achieve Compliance to the New Implemented E-Waste Law in India", **Patrick Wiedemann, Reverse Logistics Group, Germany**

11.30 – 12.00 "The Latest Development of Dell's Engagement of Circular Economy"
Vivian Tai, DELL Technologies

12.00 – 12.30 "Circular Economy in China"
Prof. Huanzheng Du, Tongji Institute of Circular Economy, China

12.30 – 13.00 "The Status of the Four New Legislative Proposals on Waste as Part of the EU Circular Economy Package"
Ofira Varga, Icc Corp, USA

Tech Box 1

Moderator: Roger Burri, Metal Depot Zurich AG, Switzerland

"**Optimization of Material Flows in Dense Medium Separation (OPTIMAT)**"
Jelle Saint-Germain, AD REM N.V., Belgium

"How to Boost **Plastics Recycling** in the Electronic Industry"
Clemens Kitzberger, EREMA Group GmbH, Austria

"Increasing Complexity in **Autocat Recycling**", **Thierry Van Kerckhoven Umicore Precious Metals Refining, Belgium**

"Various **Cable Recycling** and Technology"
Leimen Zhang, Guangzhou 3E Machinery Co., Ltd., China

13.00 – 14.30 Lunch in the exhibition area

Session 2: Recycling, Dismantling and Reuse Strategies
Session Chairman: Scott Venhaus, Arrow Electronics, Inc., USA

14.30 – 15.00 "Waste Oil Recycling & Challenges in China"
Prof. Duan Weng, Tsinghua University, China

15.00 – 15.30 "Bringing Great Outcomes for Clients in Asia and Beyond"
Gary Steel, TES (Singapore) Pte Ltd., Singapore

15.30 – 16.00 "The Current Situation of China Car Recycling Industry & Exploratory of the Future Road"
Ying Zhang, China Resource Recycling Association CRRA, China

Tech Box 2
Moderator: Fons Krist, Aurubis AG, Singapore

"Technologies to **Save Energy and Reduce Emissions** in Metal Recycling Industries"
Dr Joachim von Schéele, The Linde Group, China

"High Stroke Feeders for Scrap Recycling: **Improve Purity and Profits**"
Dick Reeves, General Kinematics, USA

"**Waste Management**, Dismantling and Recycling at Ambigroup"
Ricardo Diogo, Ambigroup Reciclagem SA, Portugal

16.00 – 16.30 Coffee and tea break in the exhibition area

Session 3: Country Reports
Session Chairman: Vivian Tai, DELL Technologies

16.30 – 17.00 "E-Waste in India"
Vijay Mandora, ECS Group, India

17.00 – 17.30 "Creating an E-Waste Recycling Market in Middle East, Africa and Caucasus"
Stuart Fleming, EnviroServe, United Arab Emirates

Tech Box 3
Moderator: Prof. Duan Weng, Tsinghua University, China

"Options to Combine Metal Mining from **Bottom Ash and Shredder Residue**"
Robert Leeffink, Decistor BV, Netherlands

"**Sorting** of Exhausted Batteries and Alkaline and Zinc-Carbon Battery Recycling"
Dr Alexandre Comino, Hellatron Recycling Division, Italy

As from 17.30 "Meet your clients" reception in the exhibition area sponsored by



CONFERENCE PROGRAM

THURSDAY, NOVEMBER 16, 2017

08.00 – 09.00 Welcome coffee and tea in the exhibition area

	Session 4: Circular Economy II Session Chairman: Venkatesha Murthy, Vans Chemistry Pte. Ltd., Singapore	Tech Box 4 Moderator: Prof. Hsiao-Kang Ma, National Taiwan University, Taiwan
09.00 – 09.30	"Progress of Management in Implementation of EPR and Collection & Recovery of Traction Batteries in Chinese Automotive Industry" Meng Wu, China Automotive Technology and Research Center (CATARC), China	"Analysis of Economic and Social Ripple Effects of Remanufacturing -Related Industry of the Republic of Korea Using an I/O Table" Dr Yong-Sung Jun, KITECH (Korea Institute of Industrial Technology), Korea
09.30 – 10.00	"Making the Circular Economy a Reality (Real Life Examples)" Peter Tamblyn, Close the Loop Ltd., Australia	"Safe and Profitable Collection of Lead Acid Batteries" Nachum Shaham, Dolav Asia Pacific Co., Ltd., Hong Kong
10.00 – 10.30	"The European Approach for End of Life Batteries – Introduction of the German Model" Tobias Schulze Wettendorf, GRS Service GmbH, Germany	"New Technology to Recover Clean Rare Earth Metals from Waste" Prof. Christian Ludwig, Paul Scherrer Institute PSI, Switzerland

10.30 – 11.00 Coffee and tea break in the exhibition area

	Session 5: Company Spotlights Electronics Recycling Session Chairman: Thierry Van Kerckhoven, Umicore Precious Metals Refining, Belgium	Tech Box 5 Moderator: Stephan Schwarz, ALBA International Recycling, Germany/ China
11.00 – 11.30	"Custom-Tailored Plant Concepts for the Disposal of Cooling Device Plants in Asia", Peter Hessler, URT Umwelt- und Recyclingtechnik GmbH, Germany	" Pyrolysis – Key Technology to Recover Metals from Shredder Residues" Dr Peter Hense, Fraunhofer Institute UMSICHT, Germany
11.30 – 12.00	"Electronics and Cars Recycling – What's the Difference?!" Bjorn Thon, RENAS AS, Norway	"Quo Vadis Flat Screens " Andreas Krebs, BLUBOX Trading AG, Switzerland
12.00 – 12.30	"Car Dismantling & Equipments for Steel Recycling" Haihua Shi, Hubei Lidi Machine Tool Co., Ltd., China	"Challenge for Social Business towards Future Circular Economy in Asia – Japanese Auto-recyclers as Social Venture" Prof. Minoru Goko, JARA (Japan Automotive Recyclers Association), Japan



12.30 – 14.00 Lunch in the exhibition area

Session 6: Company Spotlights Cars Recycling

Session Chairman: Wei Sun, Volkswagen (China) Investment Co., Ltd., China

14.00 – 14.30 "Norwegian ELV Recycling Account"

Harald A. Damhaug, ALBARAN AS, Norway

14.30 – 15.00 "An Integrated Model for End-of-Life Vehicle Recycling in Developing Economies – Special Reference to India"

Dr Lakshmi Raghupathy, Former Director, Ministry of Environment & Forests Advisor/Consultant Environment & Waste Management, India

15.00 – 15.30 Coffee and tea break in the exhibition area

Session 7: Circular Economy III

Session Chairman: Roger Burri, Metal Depot Zurich AG, Switzerland

15.30 – 16.00 "Circular Economy, Yes! – Circle of Poison, No"

Jim Puckett, Basel Action Network (BAN), USA

16.00 – 16.30 "Promotion of the Circular Economy Through Electronics Recycling Certification in China and the Rest of Asia"

John Lingelbach, SERI (Sustainable Electronics Recycling International), USA

As from 16.30 "Bye bye bar" in the exhibition area

FRIDAY, NOVEMBER 17, 2017

09.00 – 16.00 Plant tour

09.00 – 12.00 Workshop



WHO SHOULD ATTEND?



- Collection and transportation companies
- Components & parts suppliers
- Consultants
- Electronics and car manufacturers (OEMs)
- Environmental authorities
- Ferrous & non ferrous traders
- Ferrous and stainless steel industry
- Financing organizations for WEEE and ELV
- Laboratories for material science
- Non ferrous metal industry
- Plastic industry
- Recycling and dismantling companies
- Reuse & refurbishment organisations
- Schemes and take back organizations
- Shredding companies
- Steel industry
- Universities and research institutes



“MEET YOUR CLIENTS” RECEPTION

On Wednesday, November 15, 2017, a great “meet your clients” reception will be organized.

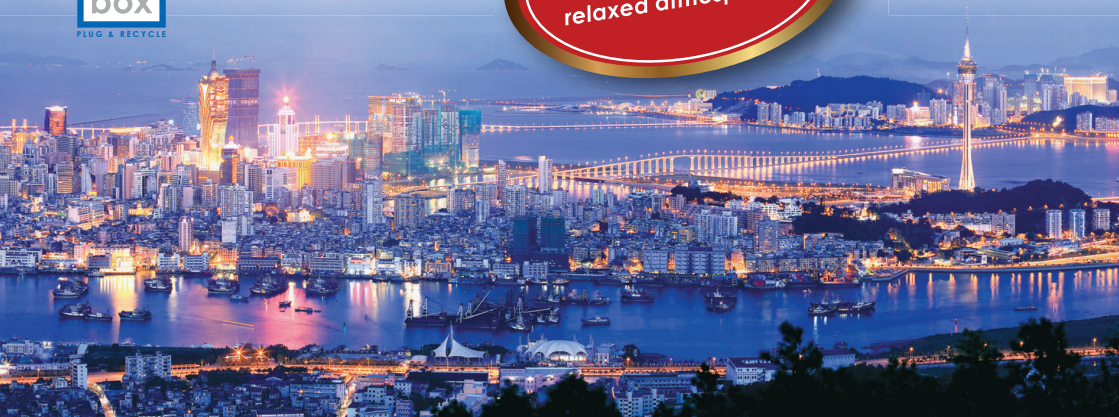
Do not miss this perfect opportunity to socialize and network with your business partners!



Sponsored by



Meet friends and
business partners in a
relaxed atmosphere!



EXHIBITION, DISPLAY BOARD & POSTER PRESENTATION



The exhibition area provides your company with the perfect opportunity to reach key industry decision makers. Promote your products to all conference attendees. The fees for an exhibition booth for the duration of the conference are:

Booth 6 m² (2 m x 3 m)	US\$ 3'650.-
Booth 12 m² (3 m x 4 m)	US\$ 4'990.-
Display board (board printing)	US\$ 690.-
Poster presentation (wall rental)	US\$ 350.-

Space is limited, so take your chance and book today!



EXHIBITORS

AS PER OCTOBER 17, 2017



PLANT TOUR

FRIDAY, NOVEMBER 17, 2017

**ALBA INTEGRATED WASTE SOLUTIONS
LIMITED, HONG KONG***



Visit of the new built waste electrical and electronic equipment treatment and recycling facility

09.00	Departure by bus & ferry to ALBA Integrated Waste Solutions Limited
11.30	Arrival at ALBA Integrated Waste Solutions Limited
11.30 – 13.30	Visit of the new built waste electrical and electronic equipment treatment and recycling facility
16.00**	Arrival at Hong Kong International Airport

ALBA Integrated Waste Solutions Limited is a joint venture company which was established between the recycling specialist ALBA Group from Germany and local solid waste management service provider Integrated Waste Solutions Group Holdings Limited (IWS).

The Hong Kong Government entered into a contract with ALBA IWS to design and build the Waste Electrical and Electronic Equipment Treatment and Recycling Facility (WEEETRF), provide a collection service and operate the facility until 2027. The facility will use state-of-the art technology provided by the ALBA Group to process refrigerators, TVs, computers, washing machines and air conditioners into valuable secondary raw materials while controlling the management of the hazardous materials that are contained in this equipment.

www.weee.com.hk

* Plant tours will take place with a minimum of 10 participants

** No guarantee on arrival time due to traffic conditions & immigration process

ALBA



TWS

Hong Kong's First Integrated E-waste Management Programme



www.weee.com.hk
ALBA Integrated Waste Solutions (Hong Kong) Ltd.



ICM AG
International
Congress & Marketing
Schwaderhof 7
5708 Birrwil, Switzerland

+41 62 785 10 00
+86 182 176 289 10 (Chinese)

info@icm.ch
www.icm.ch

ORGANIZER



**JEANETTE
DUTTLINGER**
Conference Organizer



**YING
LIU REICHENBACH**
Conference Assistant



**SUSANN
SCHMID**
Conference Assistant



**JULIA
MOSER**
Conference Assistant



**MICHAL
FREI**
Conference Assistant



**SANDRA
MANNHART**
Conference Assistant



**ANNA ROSA
BAUMANN**
Conference Assistant



**ANGELA
DORNBIERER**
Conference Assistant



**GINA
JORDI**
Conference Assistant

WORKSHOP



ELV Recycling Challenges & Opportunities

Moderator & Organizer

Dr Lakshmi Raghupathy, Former Director, Ministry of Environment & Forests Advisor/Consultant Environment & Waste Management, India

Date

Friday, November 17, 2017

Time

9.00 – 12.00

Venue

Sheraton Grand Macao Hotel

Fees

US\$ 150.– per person
before September 30, 2017 (early bird)
US\$ 180.– per person
after September 30, 2017



Green Dismantling

TOPICS FOR DISCUSSIONS

- Global ELV Recycling Scenario
- Policies, Regulations ELV Management
- Extended Producer Responsibility (EPR)
- Environmentally Sound Management
- Successful Business Models
- International Recycling Standards
- Newer Approaches – Design for Recycling, Green Dismantling
- Life Cycle Analysis, Resource Efficiency

Who should attend the workshop?



DEVELOPMENT / DESIGN
Recycling improvement design / development of Ecological Plastic



LIFE CYCLE OF VEHICLE



RECYCLING

Reduction of discarded materials



END-OF-LIFE

Recycling old batteries, motors and other recoverable parts

Limited seats – Please register by using ICM AG registration form

COMPANY PROFILE

Hellatron Recycling division is an Italian company active on the development and distribution of innovative recycling technology solutions. The range of our solutions involves several waste streams such as solid urban, car batteries, solar panels, alkaline batteries and electrical & electronic equipment in general. We are market leaders on the WEEE (Waste Electrical and Electronic Equipment) sector. Our state of the art processes are designed to treat Large & Small Domestic appliances, Information Technology & Telecommunication equipment, Cooling & Freezing appliances, and Monitor & Televisions, achieving superior environmental and recycling performances.

Our technologies are focused in optimizing the resources available, transforming a "problem" into an "opportunity". For instance we have developed the first process in the world capable of fully recover the lead that are inside the cathode ray tube (CRT) glass using a cold hydro-metallurgical technology. Our know how is supported by the strong experience of our environmental specialists, the collaboration with universities & research centers, the direct operation of recycling facilities.

OUR SOLUTIONS



CRT LEAD GLASS RECYCLING



ELECTRIC ELECTRONIC WASTE



SOLAR PANEL RECYCLING



SORTING OF USED BATTERIES & ALKALINE BATTERY RECYCLING



LEAD BATTERY RECYCLING



MUNICIPAL WASTE TREATMENT



ECOAIR (INDUSTRIAL AIR PURIFICATION)



BIO SILICON (RICE HULLS RECYCLING)

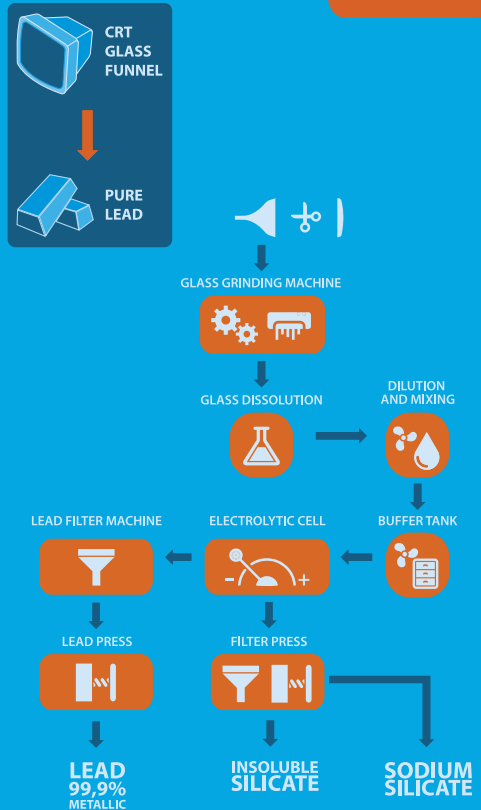
CRT LEAD GLASS RECYCLING

We have developed the first process in the world capable of fully recover the lead that are inside the cathode ray tube (CRT) glass using a cold hydro-metallurgical technology. Starting from fine grinded funnel glass, the process entails a series of reactions and terminates with the recovery of the lead, done with the utilization of an electrolytic cell. The output of our process are pure metallic lead, Sodium silicate (water glass) and not soluble silicates. Our technology do not generate any kind of air pollution and waste by products.

- FULL RECOVERY OF LEAD
- SECURED RECYCLING RATE
- COLD HYDRO-METALLURGICAL PROCESS
- SUPERIOR ENVIRONMENTAL PERFORMANCE

PROCESS

PATENTED TECHNOLOGY





广州市滨一塑料机械设备有限公司
Guangzhou Binyi Plastics Machinery Co.,Ltd
PROFESSIONAL DESIGN FOR WASTE RECYCLING

Guangzhou Binyi Plastics Machinery Co.,Ltd is the leading manufacturer specializing in designing and manufacturing all kinds of wastes recycling line with the experience of more than 13 years. We have whole line recycling machinery for:

1. Batteries (Household dry battery & Car lead acid battery & Lithium battery & Nickel-metal hydride battery, etc)
2. Hard disk & Integrated circuit recovery & Electric wire recycling
3. Toner cartridge & Papers recycling
4. Refrigerator & TV & Washing machine & Air conditioner recycling
5. Kitchen waste recycling
6. All kinds of plastics & Nylon recycling
7. Mixed plastic high-voltage electrostatic separator
8. Sinking & floating materials washing & separating
9. Industrial central dust & gas cleaning treatment



工厂地址：广州市天河区东圃前进街石宦路10号

Factory Address: No.10 Shihuan Road, Qianjin Street, Dongpu Town, Tianhe District, Guangzhou, China.

Tel: 0086-020-82521801 020-82574365 Fax: 0086-020-82574355

Email: binyimachinery@gzbinyi.cn binyimachine@gzbinyi.cn binyiplastics@gzbinyi.cn

Website: www.gzbinyi.cn www.gzbinyi.en.alibaba.com binyijixie.cn.1688.com

E-SCRAP & AUTOMOTIVE PROCESSING

SHREDDING SYSTEMS & INDIVIDUAL RECYCLING PLANTS



- Carbon
- Automotive Interior
- Alloy Wheels
- Aluminium Cast Pieces
- Keys
- LCD-Monitor Recycling
- Refrigerators & Air Conditioners
- Washing Machines & Copiers
- & much more

**VISIT THE FIRST PLANT
FOR ELECTRONIC WASTE
RECYCLING OF ITS KIND!**

www.erdwich.com

Register for the **Plant Tour** „ALBA
Integrated Waste Solutions Limited“

Upcoming ICM Events:

www.icm.ch

17th International Electronics Recycling Congress IERC 2018

IERC
2018



January 17 – 19, 2018
Salzburg, Austria



18th International Automobile Recycling Congress IARC 2018

IARC
2018



March 14 – 16, 2018
Vienna, Austria



23rd International Congress for Battery Recycling ICBR 2018

ICBR
2018



September 26 – 28, 2018
Berlin, Germany



REGISTER BY
SEPT. 30, 2017
AND PROFIT FROM
DISCOUNTED RATES

Participants registering and paying **before September 30, 2017** will benefit from a reduced registration fee. The registration fee includes conference, entrance to the exhibition, proceedings and luncheons.

REGISTRATION FEES

	before Sept. 30, 2017	after Sept. 30, 2017
Conference fee		
Participants	US\$ 1'590.–	US\$ 1'690.–
Speakers	US\$ 990.–	US\$ 1'090.–
Universities, government & authorities	US\$ 690.–	US\$ 790.–
 Tuesday, Nov. 14, 2017 – Plant tours		
GAC Group, China	US\$ 150.–	US\$ 180.–
Guangzhou Valuda Group, China	US\$ 150.–	US\$ 180.–
Foshan Shunde Xinhuanbao, China	US\$ 150.–	US\$ 180.–
 Friday, Nov. 17, 2017 – Plant tour and Workshop		
Plant tour		
ALBA Integrated Waste Solutions Limited, Hong Kong	US\$ 150.–	US\$ 180.–
 Workshop		
ELV Recycling Challenges and Opportunities	US\$ 150.–	US\$ 180.–
 Conference registration on site	US\$ 100.– surcharge	

Online registration

You may also register online at: www.icm.ch/wrf-2017

Conference language and additional proceedings

The language of the conference is English and Chinese. Simultaneous interpretation translation in English and Chinese will be offered at the conference.

If you cannot attend the conference, you may purchase the complete proceedings at US\$ 350.–. Participants will get the proceedings free of charge.

Payment

Payment should be made in US\$ by bank transfer or by credit card.

SPONSORS:

